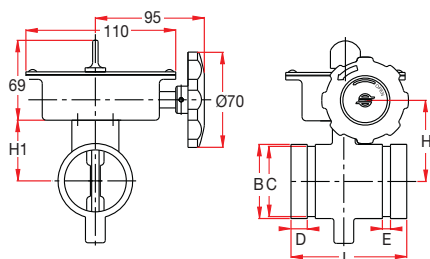


# VALVES / Style 500G - 500T

## STYLE 500G



## BRONZE GROOVED END BUTTERFLY VALVE

**Specifications**  
**Size:** DN50(2") - DN65(2 1/2")  
**Working Press.:** 16 Bar / 300 psi  
**Max. Test Press.:** 24 Bar / 350 psi  
**Working Temp.:** Up to 90° Celsius

**Material**  
**Body:** Bronze ASTM B505, Red Brass ASTM B584  
**Disc:** Aluminum Bronze ASTM B148, Red brass ASTM B584, EPDM coated  
**Stem:** Nickel-Chrome ASTM A564, Hardened & Tempered

## BRONZE GERIEFTE ABSPERRKLAPPEN

**Technische Daten**  
**Nennweite:** DN50(2") - DN65(2 1/2")  
**Arbeitsdruck:** 16 Bar / 300 psi  
**Max. Druckprüfung:** 24 Bar / 350 psi  
**Betriebstemp.:** Bis max. 90° Celsius

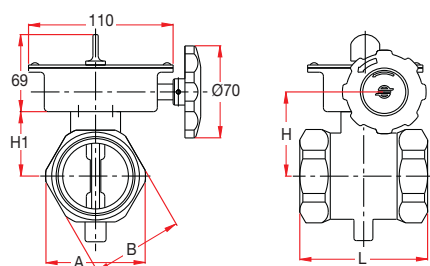
**Werkstoffe**  
**Gehäuse:** Bronze ASTM B505, Messing ASTM B584  
**Scheibe:** Al. Messing ASTM B148, Gusseisen ASTM B584, EPDM beschichtet  
**Welle:** Gehärtete Nickel-Chrome ASTM A564

## BRONZEN GEGROEFDE VLINDERKLEPPEN

**Specificaties**  
**Maat:** DN65(2 1/2") - DN300(12")  
**Werkdruk:** 16 Bar / 300 psi  
**Max. Testdruk:** 24 Bar / 350 psi  
**Temperatuurbereik:** tot max. 90° Celsius

**Materiaal**  
**Carrosserie:** Brons ASTM A505, Red Brass ASTM B584  
**Schijf:** Aluminum brons ASTM B148, Red brass ASTM B584, EPDM ingekapseld  
**Staal:** Gehard Nikkel-Chrome ASTM A564

## STYLE 500T



## BRONZE THREADED BUTTERFLY VALVE

**Specifications**  
**Size:** DN25(1") - DN65(2 1/2")  
**Working Press.:** 16 Bar / 300 psi  
**Max. Test Press.:** 24 Bar / 350 psi  
**Working Temp.:** Up to 90° Celsius

**Material**  
**Body:** Bronze ASTM B505, Red Brass ASTM B584  
**Disc:** Aluminum Bronze ASTM B148, Red brass ASTM B584, EPDM coated  
**Stem:** Nickel-Chrome ASTM A564, Hardened & Tempered

## BRONZE ABSPERRKLAPPEN GEWINDE

**Technische Daten**  
**Nennweite:** DN25(1") - DN65(2 1/2")  
**Arbeitsdruck:** 175 psi. (12 bar)  
**Max. Druckprüfung:** 350 psi. (24 bar)  
**Betriebstemp.:** Bis max. 90° Celsius

**Werkstoffe**  
**Gehäuse:** Bronze ASTM B505, Messing ASTM B584  
**Scheibe:** Al. Messing ASTM B148, Gusseisen ASTM B584, EPDM beschichtet  
**Welle:** Gehärtete Nickel-Chrome ASTM A564

## BRONZEN DRAAD VLINDERKLEPPEN

**Specificaties**  
**Maat:** DN25(1") - DN65(2 1/2")  
**Werkdruk:** 16 Bar / 300 psi  
**Max. Testdruk:** 24 Bar / 350 psi  
**Temperatuurbereik:** tot max. 90° Celsius

**Materiaal**  
**Carrosserie:** Brons ASTM A505, Red Brass ASTM B584  
**Schijf:** Aluminum brons ASTM B148, Red brass ASTM B584, EPDM ingekapseld  
**Staal:** Gehard Nikkel-Chrome ASTM A564

Style	Nominal Size (Inches)	Pipe Outside Diam.	Dimensions								Weight Kg.	Approvals
			A	B	C	D	E	H	H1	L		
Grooved End Gerieft Gegroeft	2" / 50	60.3	-	60.3	57.1	15.8	7.9	75.0	50.0	114.0	2.20	FM / UL
	2 1/2" / 65	76.1	-	73.0	69.0	15.8	7.9	65.0	50.0	114.0	2.80	FM / UL / VDS
Threaded Gewinde Draad	1" / 25	33.7	43.7	39.7	54.0	-	-	52.0	37.0	54.0	1.53	FM / UL
	1 1/4" / 32	42.4	53.2	49.0	67.0	-	-	56.0	41.0	67.0	1.70	FM / UL
	1 1/2" / 40	48.3	58.5	56.0	73.0	-	-	59.0	44.0	73.0	1.86	FM / UL
	2" / 50	60.3	76.0	70.0	82.0	-	-	64.0	49.0	82.4	2.40	FM / UL / VDS
	2 1/2" / 65	76.1	89.0	84.0	104.0	-	-	65.0	50.0	104.0	2.90	FM / UL / VDS

GENERAL DESIGN DATA / Butterfly Valves Style 100 / 120 / 130 / 200 / 500  
 ALLGEMEINE LEISTUNGSDATEN / Absperrklappen Typ 100 / 120 / 130 / 200 / 500  
 ALGEMENE PRESTATIEGEGEVENS / Vliederkleppen Style 100 / 120 / 130 / 200 / 500

**FLOW COEFFICIENT**

Quikcoup butterfly valves have fine flow characteristics due to a narrow disc profile superior flow control and low torque operation.

Table no. 1 below depicts the flow factor (Kv) for flow of water at 16°C. and 1 Bar working pressure difference, with fully open disc.

Nominal Size (Inches / DN)	Pipe Outside Diameter	Flow faktor (Kv)
2" / 50	60.3	130
2½" / 65	76.1	240
3" / 80	88.9	333
4" / 100	114.3	720
5" / 125	139.7	1110
6" OD	165.1	1380
6" / 150	168.3	1380
8" / 200	219.1	2850
10" / 250	273.0	4705
12" / 300	323.9	8210

**STRÖMUNGSKOEFFIZIENT**

Quikcoup Absperrklappen haben sehr gute Strömungseigenschaften Die schmale Scheibe ist so konzipiert, dass sie dem Medium nur wenig Widerstand leistet. Leichtes Handling durch niedriges Drehmoment am Handrad.

Tabelle Nr. 1 gibt die Werte für den Strömungsfaktor von Wasser bei 16°C. und 1 bar in einer vollständig geöffneten Position wieder.

**STROMINGSCOËFFICIËNT**

Quikcoup vliederkleppen hebben zeer goede stromingseigenschappen welke zijn toe te schrijven aan een smalle schijf een superieure stroomregeling en een lage bedieningskoppel.

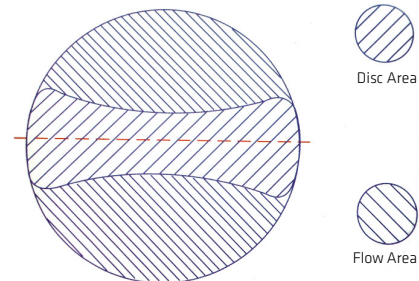
Tabel nr. 1 geeft de kernwaarden voor stromingsfactor van water bij 16°C. en 1 bar werkdrukverschil, in volledig open stand.

**CROSS SECTION OPEN POSITION OF NOMINAL PIPE DIAMETER IN %**

**QUERSCHNITT : GEÖFFNETE POSITION DER ROHRNENNWEITE IN %**

**DOORSNEDE OPEN POSITIE VAN DE NOMINALE BUISDIAMETER IN %**

Butterfly Valve Style 100 (Grooved) Absperrklappe Typ 100 (Gerieft) Vliederklep Style 100 (Gegroeft)				
Nominal Size (Inches / DN)	Pipe Outside Diameter	Pipe mm <sup>2</sup>	Disc mm <sup>2</sup>	Flow mm <sup>2</sup>
2½" / 65	76.1	2884.3	1139.4 (39.5%)	1744.9 (60.5%)
3" / 80	88.9	4231.4	1399.5 (33.0%)	2831.9 (67.0%)
4" / 100	114.3	7512.2	2279.4 (30.3%)	5232.8 (69.7%)
5" / 125	139.7	10732.9	2978.3 (27.7%)	7754.6 (72.3%)
6" OD	165.1	16535.8	3956.9 (23.9%)	12578.9 (76.1%)
6" / 150	168.3	16535.8	3956.9 (23.9%)	12578.9 (76.1%)
8" / 200	219.1	29772.0	5965.0 (20.0%)	23807.0 (80.0%)



Butterfly Valve Style 200 (Wafer) Absperrklappe Typ 200 (Zwischenflansch) Vliederklep Style 200 (Wafer)				
Nominal Size (Inches / DN)	Pipe Outside Diameter	Pipe mm <sup>2</sup>	Disc mm <sup>2</sup>	Flow mm <sup>2</sup>
2½" / 65	76.1	3117.3	1187.7 (38.1%)	1929.6 (61.9%)
3" / 80	88.9	4536.5	1418.2 (31.3%)	3188.3 (68.7%)
4" / 100	114.3	7854.0	2364.3 (30.1%)	5489.7 (69.9%)
5" / 125	139.7	10679.2	3127.2 (29.3%)	7552.0 (70.7%)
6" OD	165.1	16444.7	4285.7 (26.0%)	12159.0 (74.0%)
6" / 150	168.3	16444.7	4285.7 (26.0%)	12159.0 (74.0%)
8" / 200	219.1	29742.4	6366.9 (21.4%)	23375.5 (78.6%)

Butterfly Valve Style 500 (Grooved / Threaded) Absperrklappe Typ 500 (Gerieft / Gewinde) Vliederklep Style 500 (Gegroeft / Draad)				
Nominal Size (Inches / DN)	Pipe Outside Diameter	Pipe mm <sup>2</sup>	Disc mm <sup>2</sup>	Flow mm <sup>2</sup>
1" / 25	33.7	585.3	216.7 (37.0%)	368.6 (63.0%)
1¼" / 32	42.4	1017.9	357.5 (35.1%)	660.4 (64.9%)
1½" / 40	48.3	1256.6	432.4 (34.4%)	824.2 (65.6%)
2" / 50	60.3	1963.5	594.4 (30.3%)	1369.1 (69.7%)
2½" / 65	76.1	2922.5	1139.4 (39.0%)	1783.1 (61.0%)

GENERAL DESIGN DATA / **Butterfly Valves Switch Wiring Diagram**  
 ALLGEMEINE LEISTUNGSDATEN / **Absperrklappen Schalter Anschlussplan**  
 ALGEMENE PRESTATIEGEGEVENS / **Vlinderkleppen Schakelaar Aansluitschema**

**SWITCH WIRING DIAGRAM**

Switch scheme S-1 is for connection to the supervisory circuit or a UL Listed alarm control panel:

- Normally Open - Yellow
- Normally Closed - Red
- Common - White

Switch scheme S-2 is for auxiliary switch which may be connected per authority having jurisdiction to auxiliary device:

- Normally Open - Blue
- Normally Closed - Orange
- Common - Black

Housing ground lead #14 AWG: Green

**SCHALTER ANSCHLUSSSCHEMA**

Anschlusschema S-1: Zeigt die Verbindung an eine Überwachungsschaltung oder einer UL-geprüften Alarm Zentrale:

- Normal offen - Gelb
- Normal geschlossen - Rot
- Normal - Weiß

Anschlussplan S-2 ist für den Anschluss an eine Hilfseinrichtung von einer zuständigen Autorität:

- Normal offen - Blau
- Normal geschlossen - Orange
- Normal - Schwarz

Gehäuse Geerdet # 14 AWG: Grün

**SCHAKELAAR AANSLUITSHEMA**

Aansluitschema S-1 is voor de aansluiting op een toezichhoudende circuit of een UL-gecertificeerde alarmcentrale:

- Normaal Open - Geel
- Normaal gesloten - Rood
- Normaal - Wit

Aansluitschema S-2 is voor de aansluiting op een hulpinrichting door een bevoegde autoriteit:

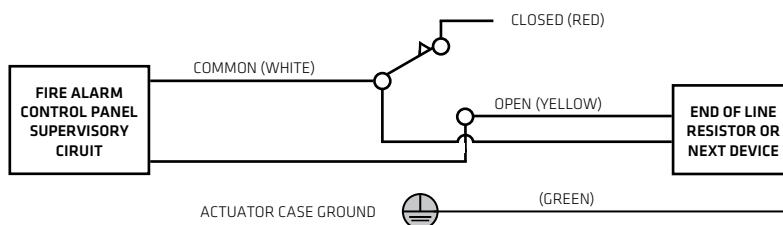
- Normaal Open - Blauw
- Normaal gesloten - Oranje
- Normaal - Zwart

Behuizingsaarde # 14 AWG: Groen

**WIRING DIAGRAM S-1**

**ANSCHLUSSSCHEMA S-1**

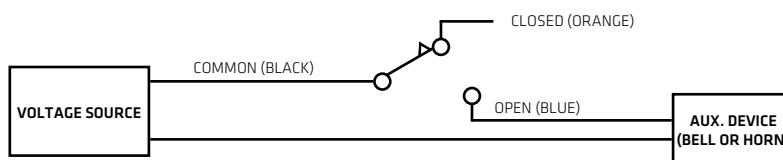
**AANSLUITSHEMA S-1**



**WIRING DIAGRAM S-2**

**ANSCHLUSSSCHEMA S-2**

**AANSLUITSHEMA S-2**



**RATED:**

5A = 1/6HP - 125/250V AC  
 or 0.5A - 125V DC  
 or 0.25A - 250V DC

**BEWERTET:**

5A = 1/6HP - 125/250V AC  
 oder 0.5A - 125V DC  
 oder 0.25A - 250V DC.

**WAARDE:**

5A = 1/6HP - 125/250V AC  
 of 0.5A - 125V DC  
 of 0.25A - 250V DC